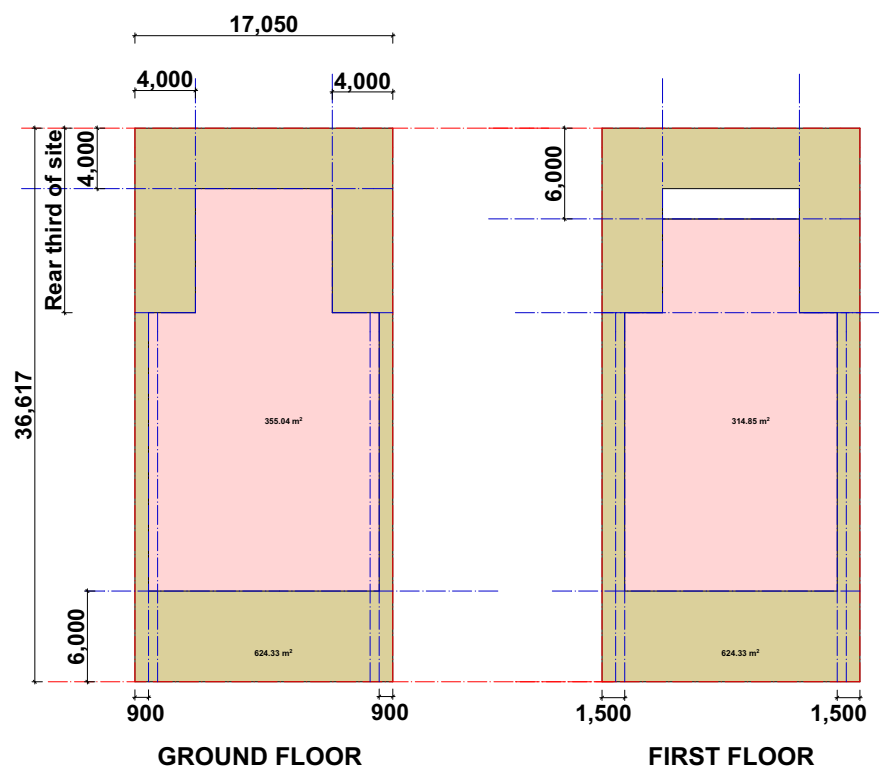


SMALL SITE (2 Lot), ENVELOPE COMPARISON
Proposed Bayside and Existing Botany
Appendix D

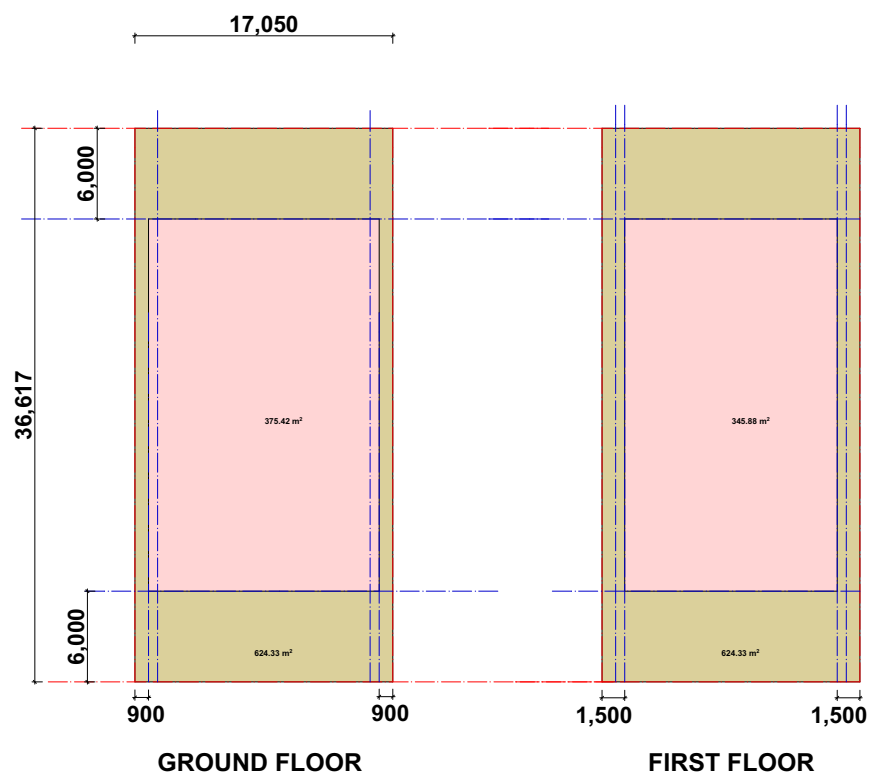


PROPOSED BAYSIDE CONTROLS

SITE AREA 624sqm
Total envelope - 677 sqm

0.7:1 FSR = 437sqm, = 65% of envelope
0.8:1 FSR = 542sqm, = 82% of envelope

SMALL SITE ENVELOPE ANALYSIS



CURRENT BOTANY CONTROLS

SITE AREA 624sqm
Total envelope - 721 sqm

0.7:1 FSR = 437sqm, = 61% of envelope
0.8:1 FSR = 542sqm, = 75% of envelope

SMALL SITE ENVELOPE ANALYSIS